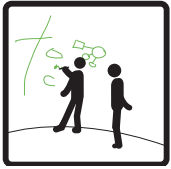
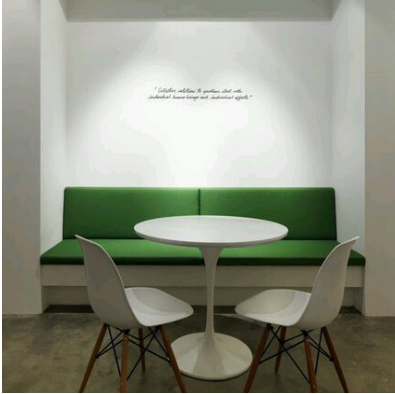
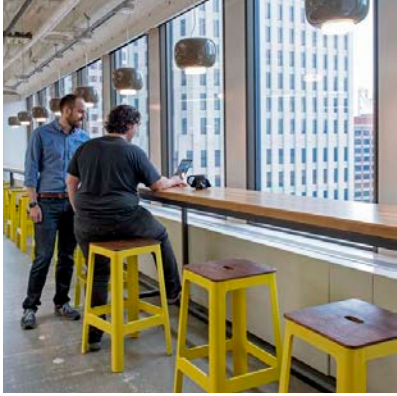
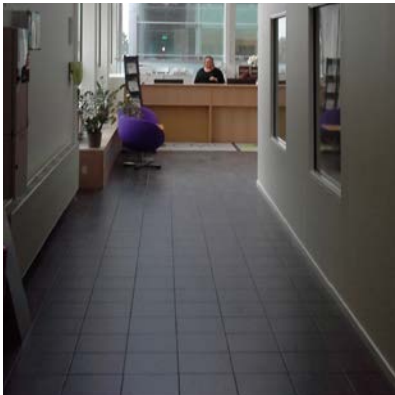


CMC
biologics

PHASE 2: IDEA GENERATION & SPACE PLANNING

space planning & space identity
proudypresent_november_2016

CMC BIOLOGICS





SPACEBRANDING & NEW LAYOUT FOR SPACEPLANNING

In the Analysis Phase it was clear to Proudlypresent that the squaremeters could be optimised in the CMC premises. To meet the growing number of employees Proudlypresent suggested to move the existing meeting rooms from 1st floor to the ground floor in order to fit more workstations. By establishing semi-transparent meeting boxes in the atrium, at the ground floor, new spaces for formal and informal meeting was created.

The idea was well received by CMC and Proudlypresent was asked to come up with a proposal for the ideal work place, at 1st and 2nd floor, where flex stations and new informal meeting spots could be integrated in the existing framework.

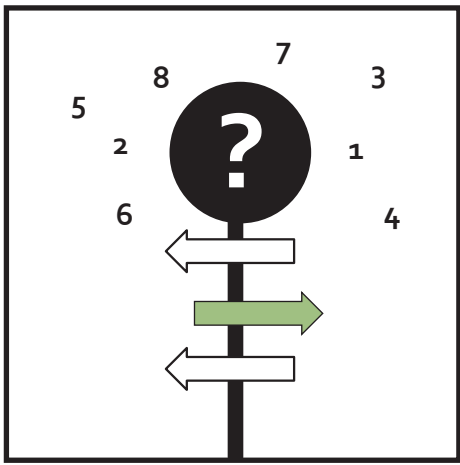
Proudlypresent got “free hands” to work with the floorplan, in order to find additional squaremeters. One of the given tasks from CMC, was to create “closed door” offices for the LT’s.

Besides the functional ideas for the ideal office space, CMC asked for a clear space branding that emphasise the values, and positive development the company is experiencing.

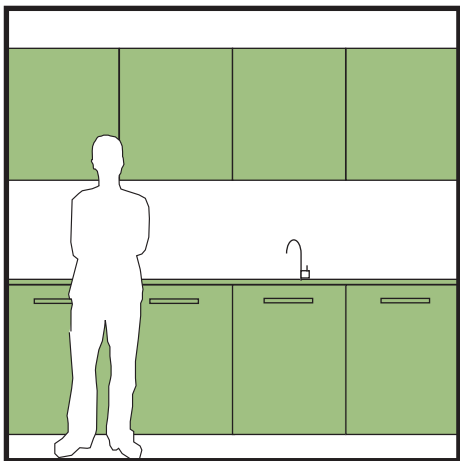
The look and feel of CMC as a company should start at the entrance and follow both the guest and the employees in every corner of the building.

The visual impression shall support the new spaces proposed and create an atmosphere that ties the different departments and floors together.

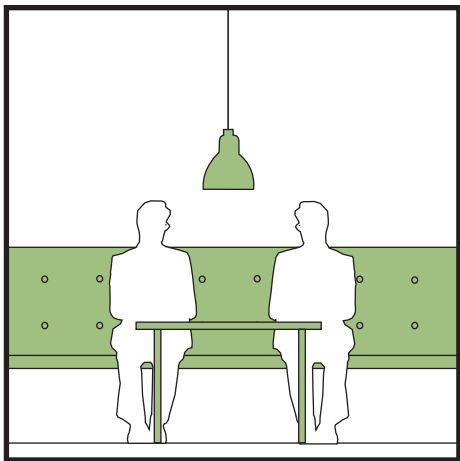
Proudlypresent has been inspired by the CMC logo and have created a continuous look, where colours, graphics and materials contribute to the new look and a receptive atmosphere.



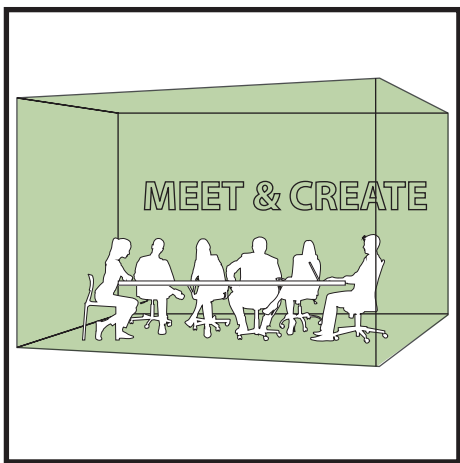
WAYFINDING
through graphics & colours



COME TOGETHER
kitchen area included in every office plan



QUICK MEET
small meeting space included in office plans

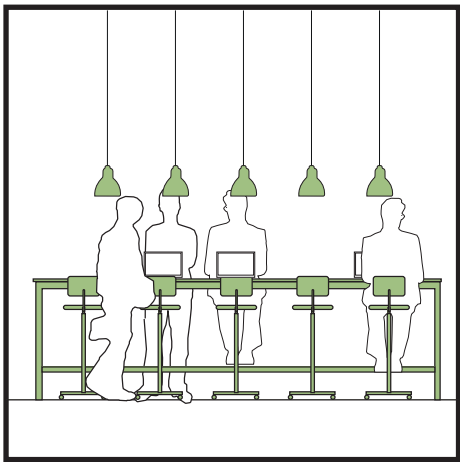


MEETING BOXES
5 x 2-stories meeting boxes at the ground floor



GRAPHICS
with inspiration from CMC logo - to create atmosphere

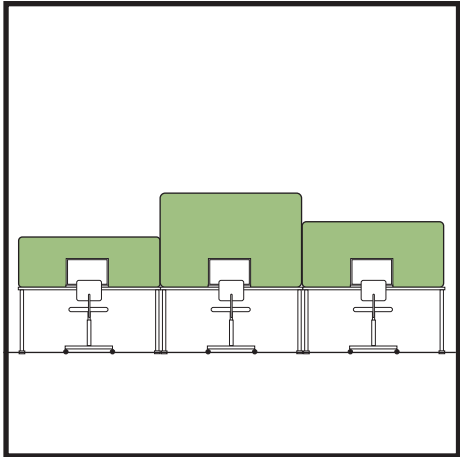
DESIGN PRINCIPALS



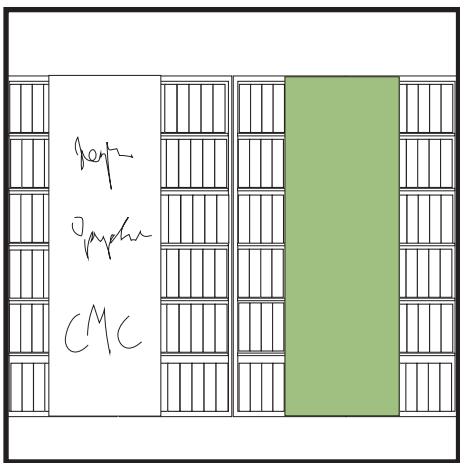
INFORMAL TABLE - FLEX STATION
new ways of working -shared bar table functioning as flex stations & informal meeting spot



FLEXIBLE DESK
storage/bookcase with tabletop can function as a shared work bar or informal meeting spot



DESK DIVIDERS
important part of the interior - as for colours & accoustics



SYSTEMATIC STORAGE
shelves in straight lines w. sliding whiteboard & accoustic board



COPY & CO.
printer & stationary organised in a functional way + “assembly” tabletop

CMC BIOLOGICS

1ST FLOOR

ANALYTIC - , UPSTREAM- & DOWNSTREAM DEVELOPMENT

- FULL TIME DESKS: 65(+2)
- PERSONAL STORAGE: <2,4M
- COMMON STORAGE: 164M
- SAFE STORAGE: 2
- PRINTER ROOM

- STUDY: 2 PEOPLE
- FLEX DESKS: 18
(STORAGE FOR SHARED PC'S)
- MEETING ROOM: 4 PEOPLE
- KITCHEN
- LT OFFICE/MANAGER: 2

MANUFACTURE

- FULL TIME DESKS: 40
- PERSONAL STORAGE: <2,4M
(FOR 12 DESKS)
- COMMON STORAGE: 95M

- FLEX DESKS: 16

SHARED FACILITIES

- STUDY: 2 PEOPLE
- FLEX DESKS: 10
- MEETING ROOM: 4 PEOPLE
- KITCHEN
- LT OFFICE/MANAGER: 2
- PRINTER ROOM

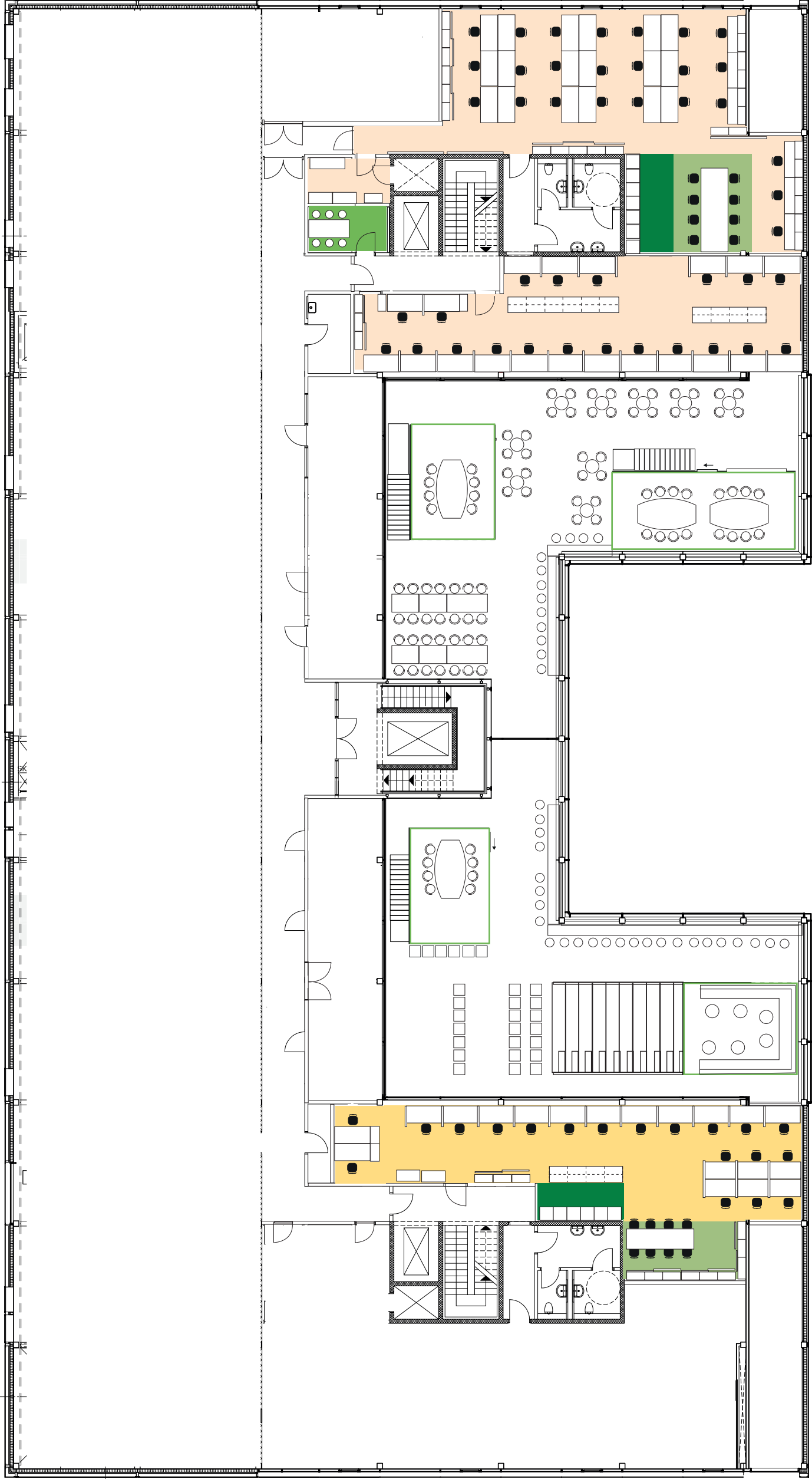
- ARCHIVE

QUALITY ASS./EQUIPMENT FAC.

- FULL TIME DESKS: 28
- PERSONAL STORAGE: < 2,4 M
- COMMON STORAGE: 83,2 M
- SAFE STORAGE: 3

FACTS & FIGURES_OFFICE SPACE

2ND FLOOR



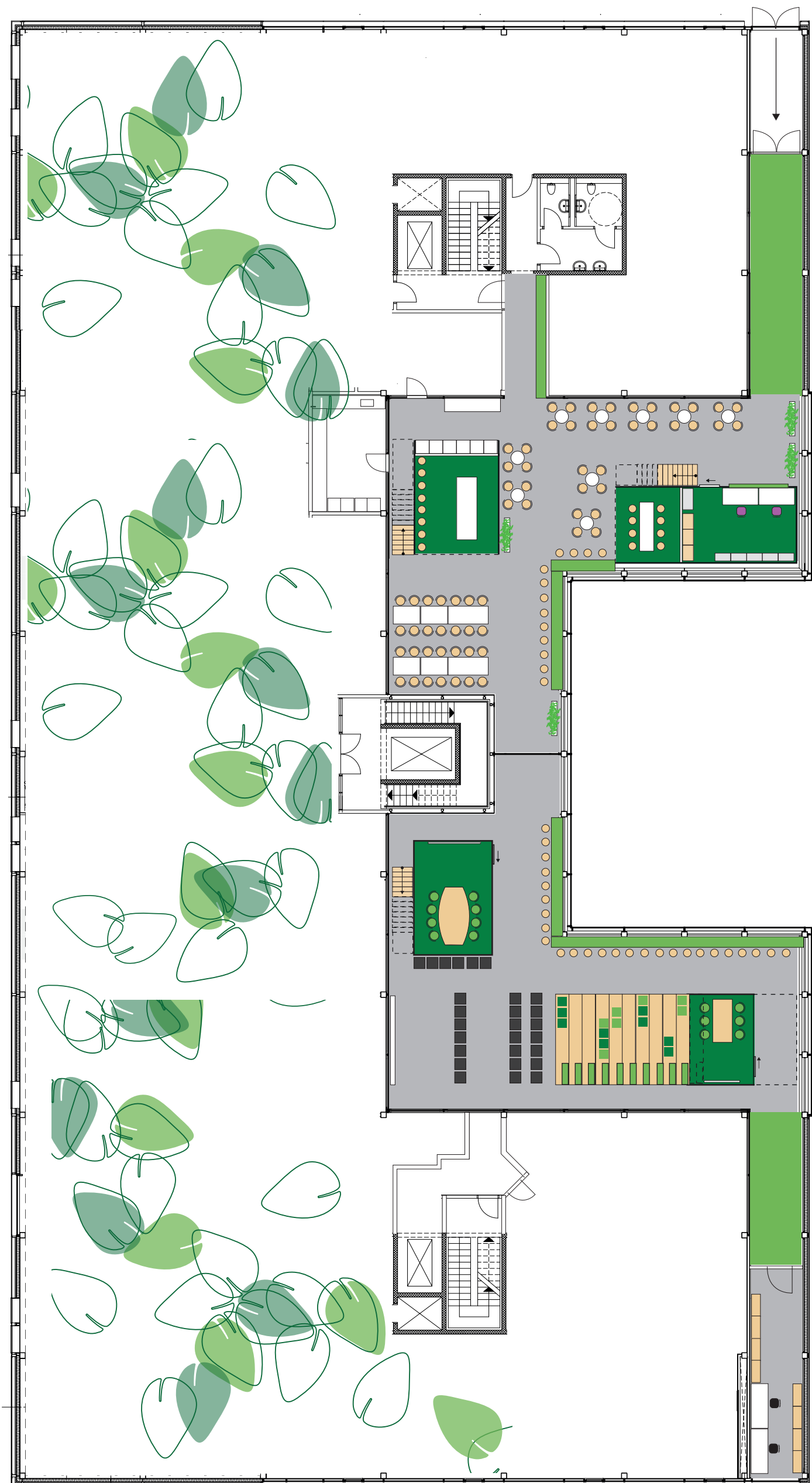
QUALITY CONTROL

- FULL TIME DESKS: 44
 - PERSONAL STORAGE: <2,4M (+19,2M FOR 6 DESKS)
 - COMMON STORAGE: 127,8M
 - SAFE STORAGE: 2
 - PRINTER ROOM
- FLEX DESKS: 8
 - MEETING ROOM: 6 PEOPLE
 - KITCHEN

EOS

- FULL TIME DESKS: 19
 - PERSONAL STORAGE: <2,4M
 - COMMON STORAGE: 92,6M
 - SAFE STORAGE: 2
- FLEX DESKS: 8
 - KITCHEN

CMC BIOLOGICS



SEATS, CANTEEN: 90
SEATS, AUDITORIUM: 125

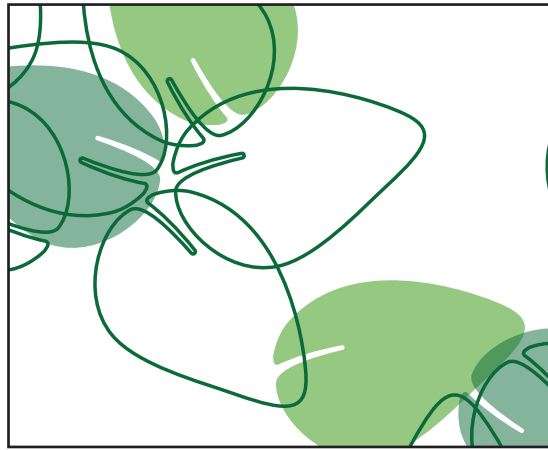
MEETING ROOMS: 5
MEETING SPACE: 3
BUFFET & KITCHENWARE
RECEPTION

FLOORPLAN_GROUND FLOOR



ENTRANCE

- From anonymous aisle to an exciting path of glass, light and green
- Glass tubes referring to laboratory glass
- CMC slogans & values used as decoration on the glass tubes
- Ceiling painted in muted green



RECEPTION

- A wooden box with a "glass top" including a meeting room for 16 people
- The leaves from the CMC logo embrace the box and makes a very green and lushious first impression of CMC



The graphic leaves emphasise the garden atmosphere

THE GARDEN OF IDEAS

WHEN PEOPLE MEET NEW IDEAS COME TO LIFE



MEETING BOXES

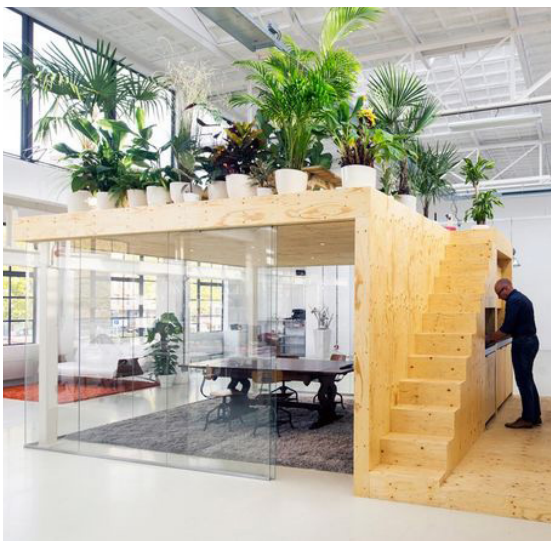
- Volume sketch of a 2 story Meeting Box
- Height of box does not block the view from 1st floor
- A total of 5 meeting boxes at ground floor



WAYFINDING

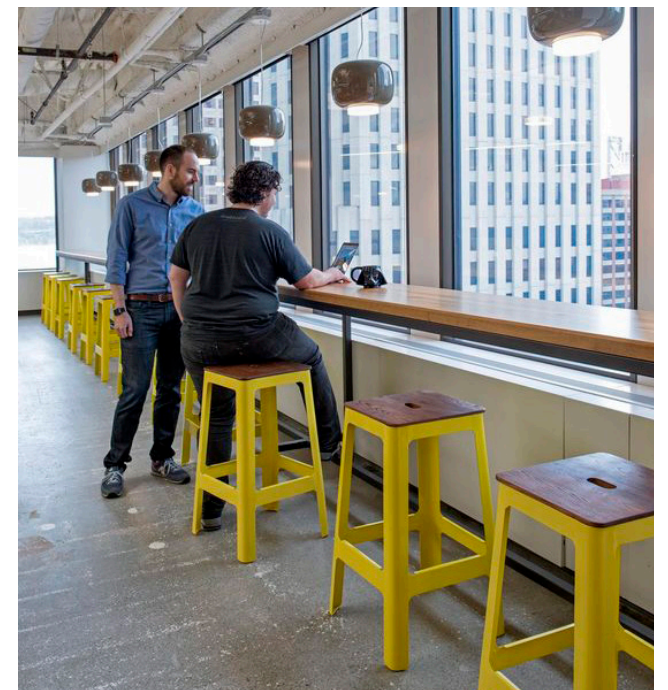
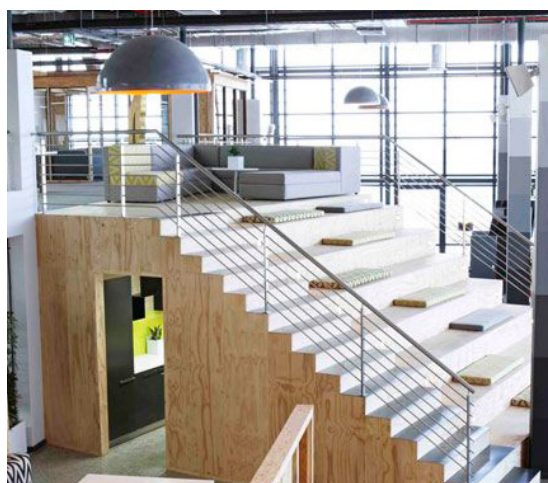
- Green CMC palette creates wayfinding throughout the common space - in aisles & by stairs/elevators at all floors
- Information/typography & colour are both functional & decorative

INSPIRATION



BOXES

- Inspiring 2-story meeting boxes
- Creates "a room in the room"
- Playful combination of materials & colours
- Stairs to top floor created as un-formal seating area
- Roof less top floor - plants to create privacy

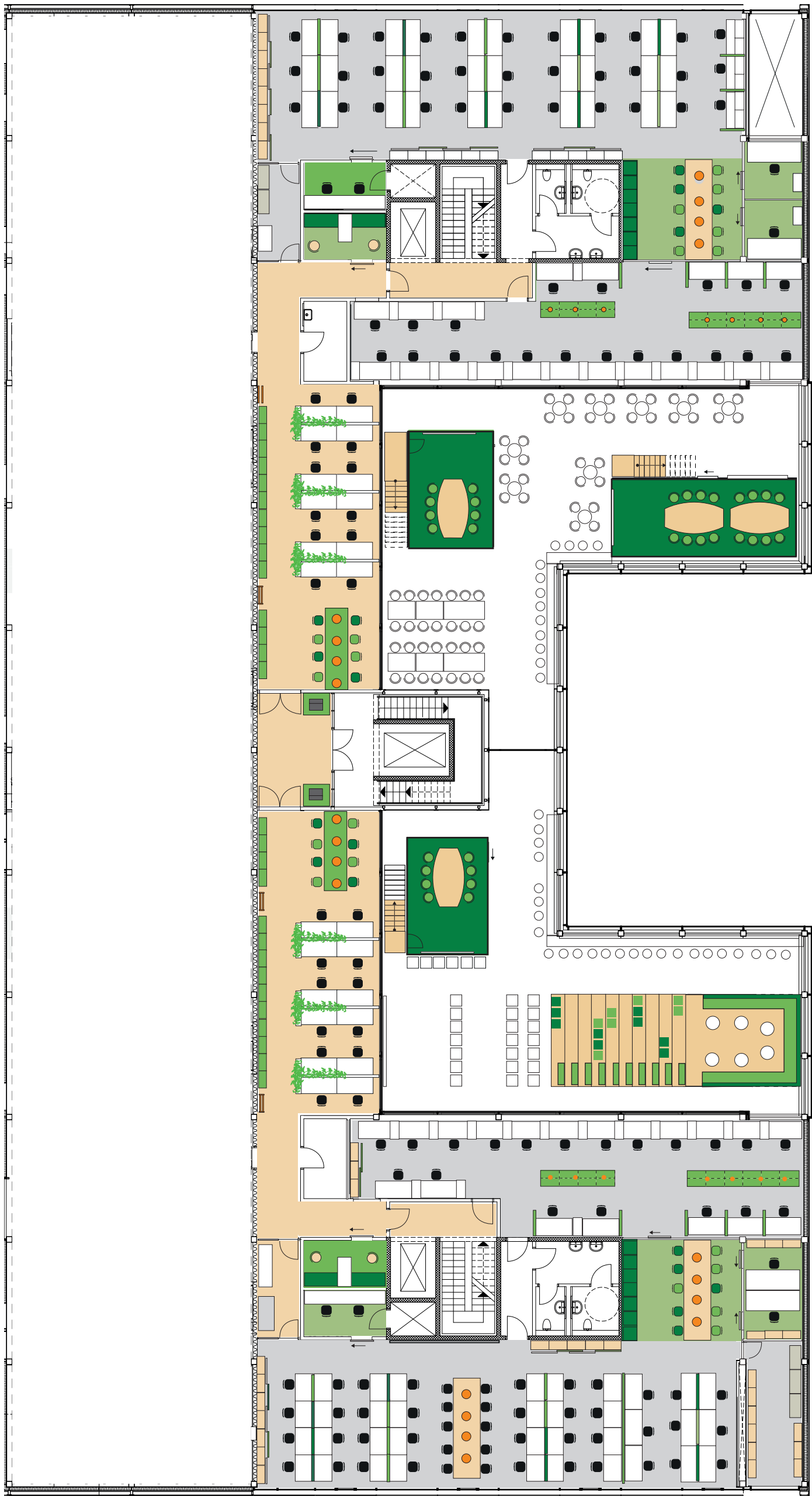


SEATING BY THE WINDOW

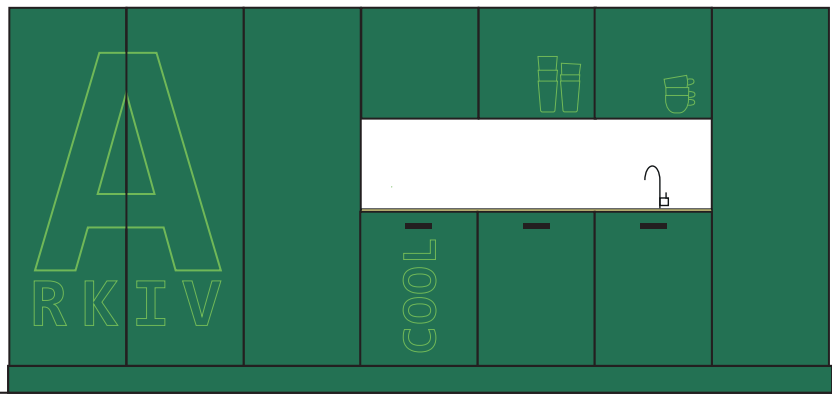
- Bar along the window for unformal meetings, work or just enjoying a cup of coffee.....

proudlypresent

CMC BIOLOGICS

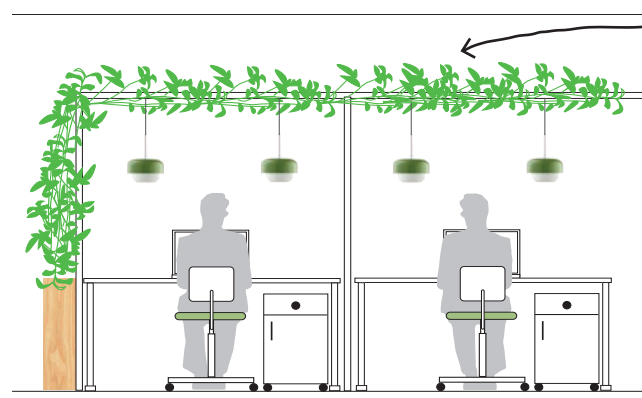


FLOORPLAN_1ST FLOOR



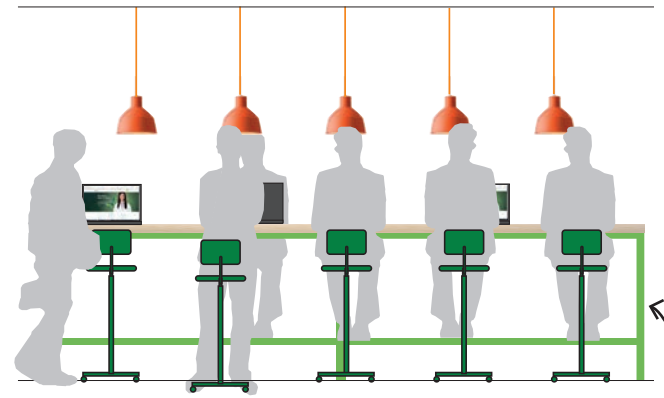
COME TOGETHER

- A natural spot to meet, by the coffee machine - informal meetings!
- Kitchen - now an integrated zone in each department
- Storage - both for binders & kitchenware
- Playful graphics for function & decoration
- Material - dark green linoleum or laminate



NEW WORK STATIONS

- Garden feel brought to new work stations (former meeting aisle)
- Frame construction for hanging pendants & climbing plants
- Wooden plant hide gives a natural, warm touch to the white and green colours

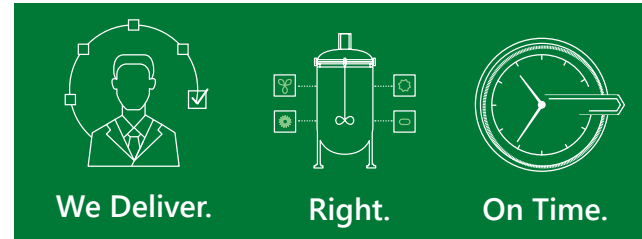


INFORMAL TABLE - FLEX

- Creates new look & feel of traditional office space
- Gives flexibility & mobility during the day
- Also work as Friday afternoon hangout-place - being placed beside the kitchen

GRAPHICS

- Pictograms & statements from CMC used as wall decoration in eg. study

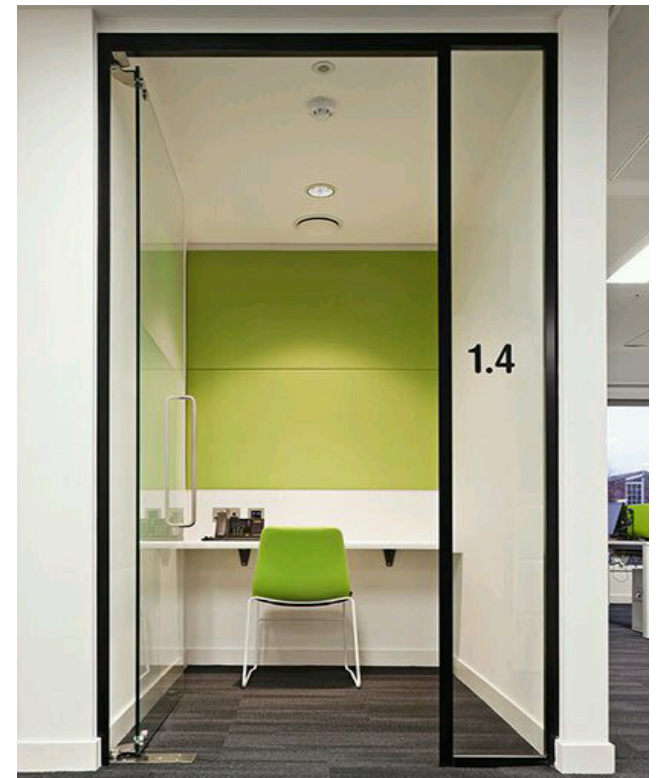
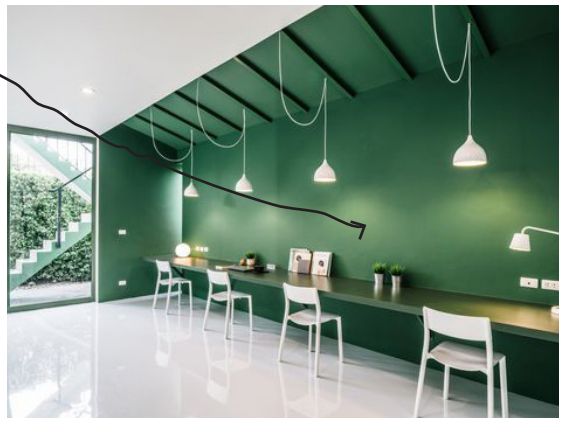
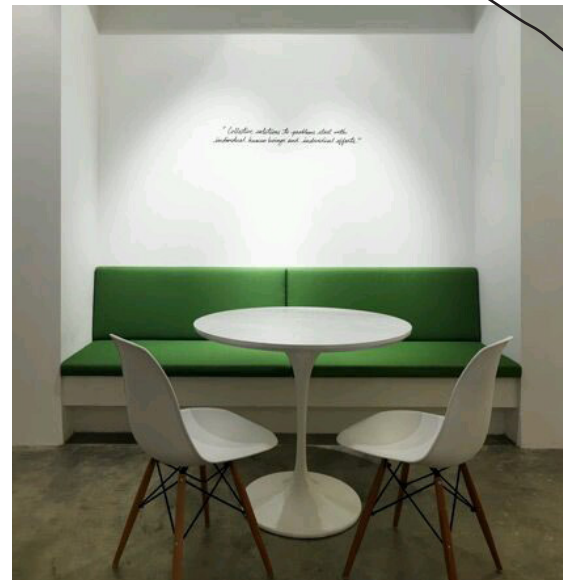


WAYFINDING

- Green CMC palette creates wayfinding throughout the common space - in aisles & by stairs/elevators at all floors
- Information/typography & colour are both functional & decorative



INSPIRATION



QUICK MEET

- The colour scheme continues in the small meeting rooms integrated in each department at 1st floor

DECORATIVE DESK

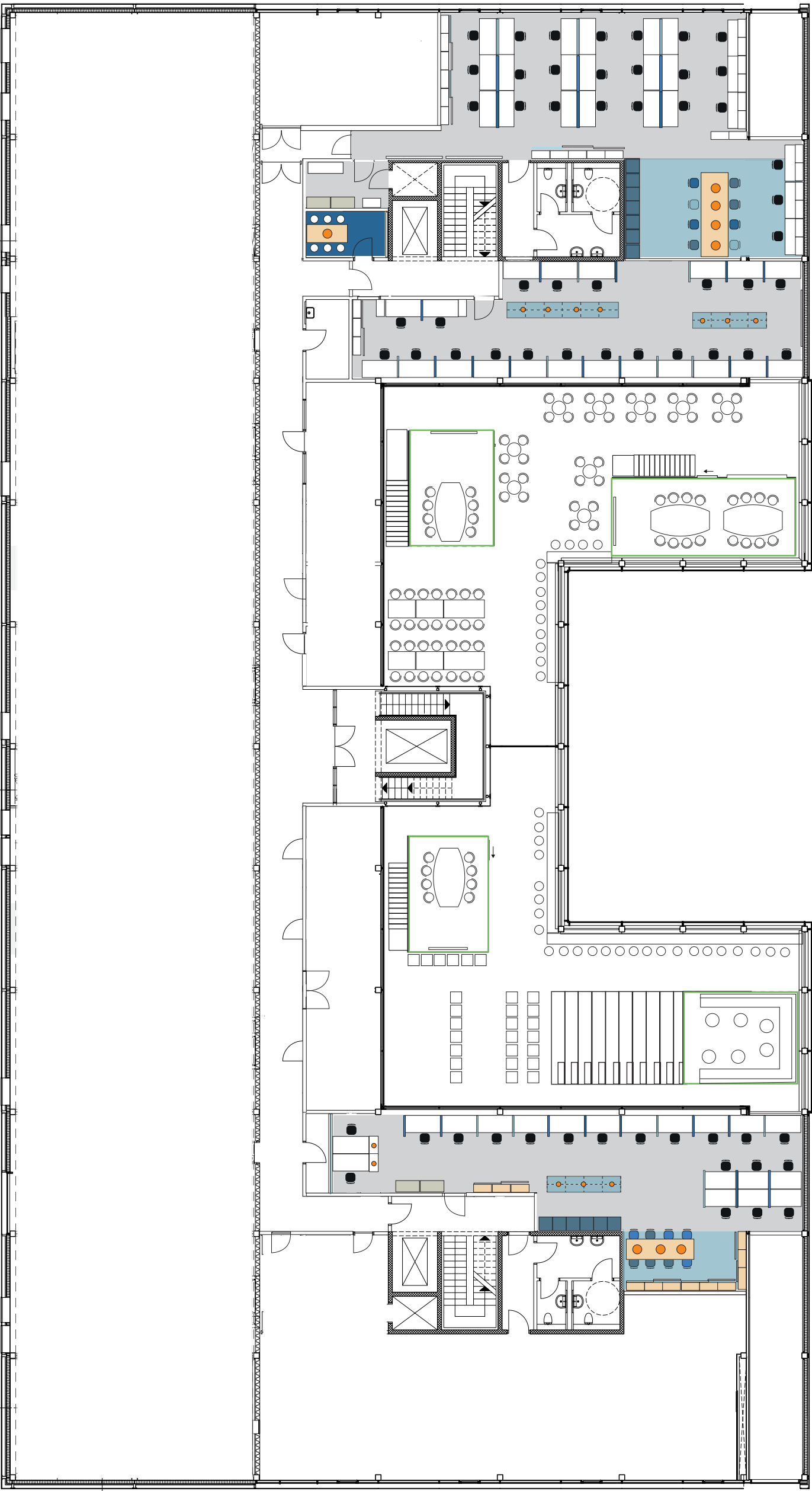
DIVIDERS

- Function & decoration
- Adding aesthetics by colour/material
- Improves accoustics & privacy

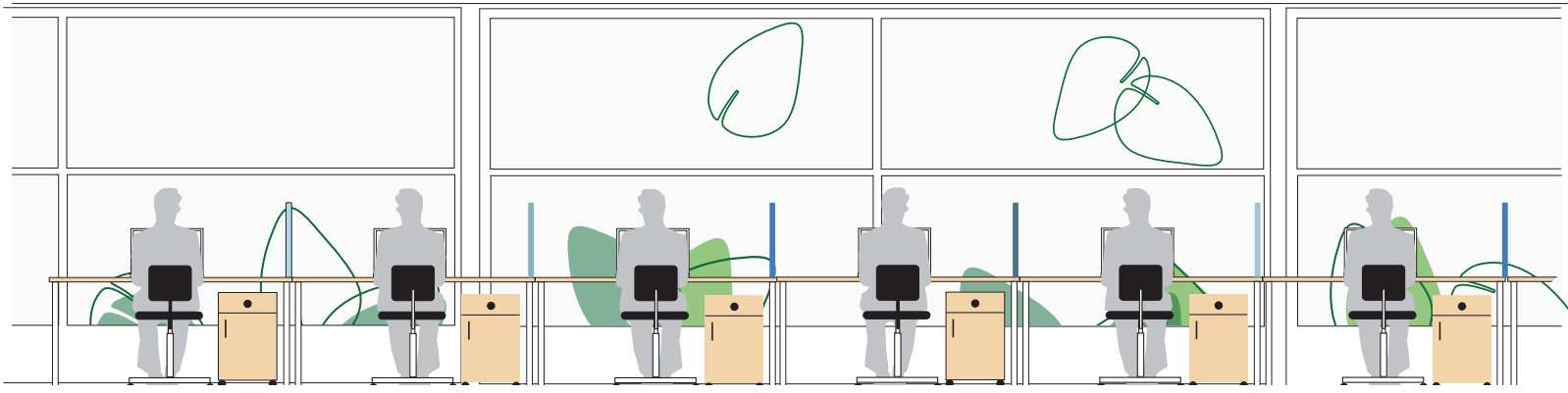
LT/MANAGER OFFICES

- New small offices made "spacious in feel" through use of glass walls
- When the boss is out of office - to be used for internal meetings
- Extra sqm taken in use for this purpose

CMC BIOLOGICS



FLOORPLAN_2ND FLOOR

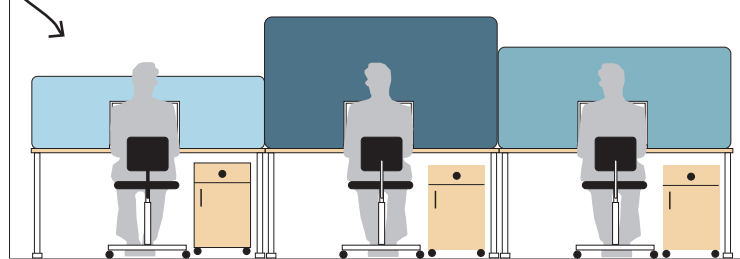


WORKSTATIONS BY THE WINDOW - View to "the garden", workstations with deskdividers in tones of blue

DESK & ROOM

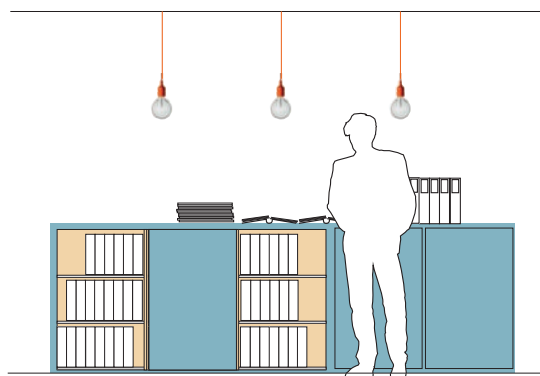
DIVIDERS

- Function & decoration
- Tones of blue
- Adding aesthetics by colour/material
- Improves accoustics & privacy
- Textiles are good sound absorbers



SYSTEMATIC STORAGE

- Re use of existing bookcase
- Organise sizes to create harmonious lines
- Sliding whiteboards & accoustic panels attached to bookcases



FLEXIBLE DESK

- storage/bookcase with tabletop function as a shared work bar or informal meeting spot
- re use of existing bookshelves - add on doors in blue
- Pendants creates an intimate atmosphere and emphasise the "room in the room" feel

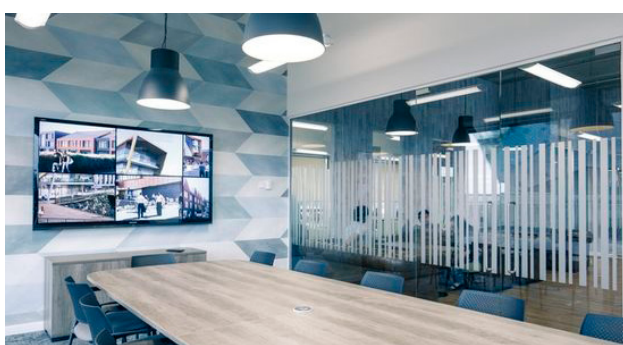


WAYFINDING

- Green CMC palette creates wayfinding throughout the common space - in aisles & by stairs/elevators at all floors
- Information/typography & colour are both functional & decorative



INSPIRATION



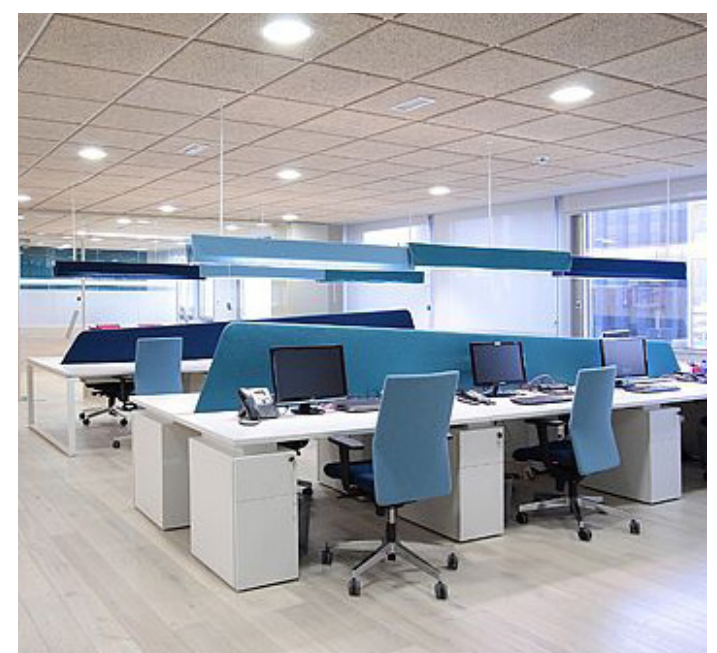
MEETING ROOM

- Colour, graphics, lighting & furniture gives identity to the room



LIBRARY LOOK

- Flex & meeting spot
- Pendants creates an intimate atmosphere and emphasise the "room in the room" feel

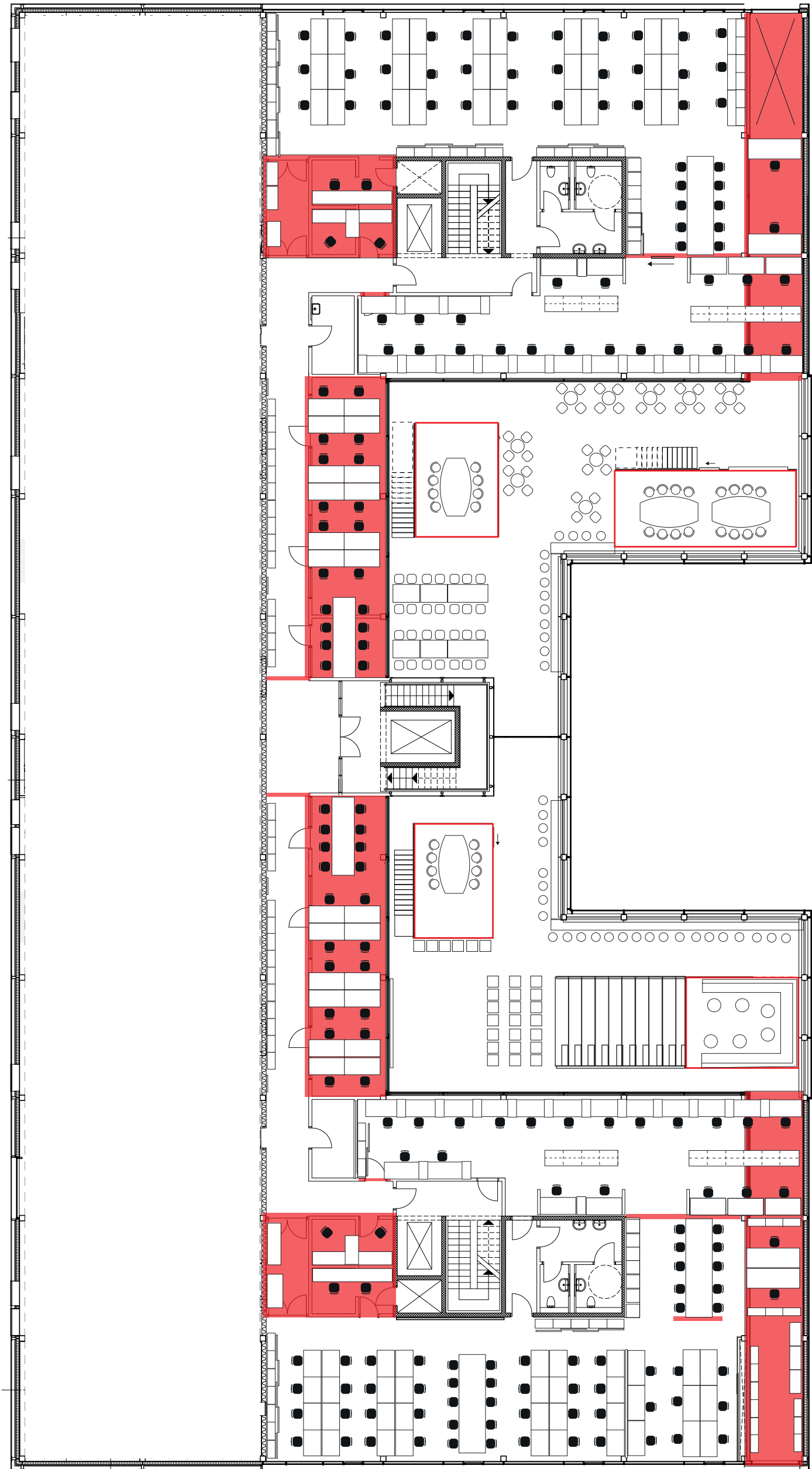


I.D VIA DESK DIVIDERS

- Asymetric desk dividers to bring identity to the room

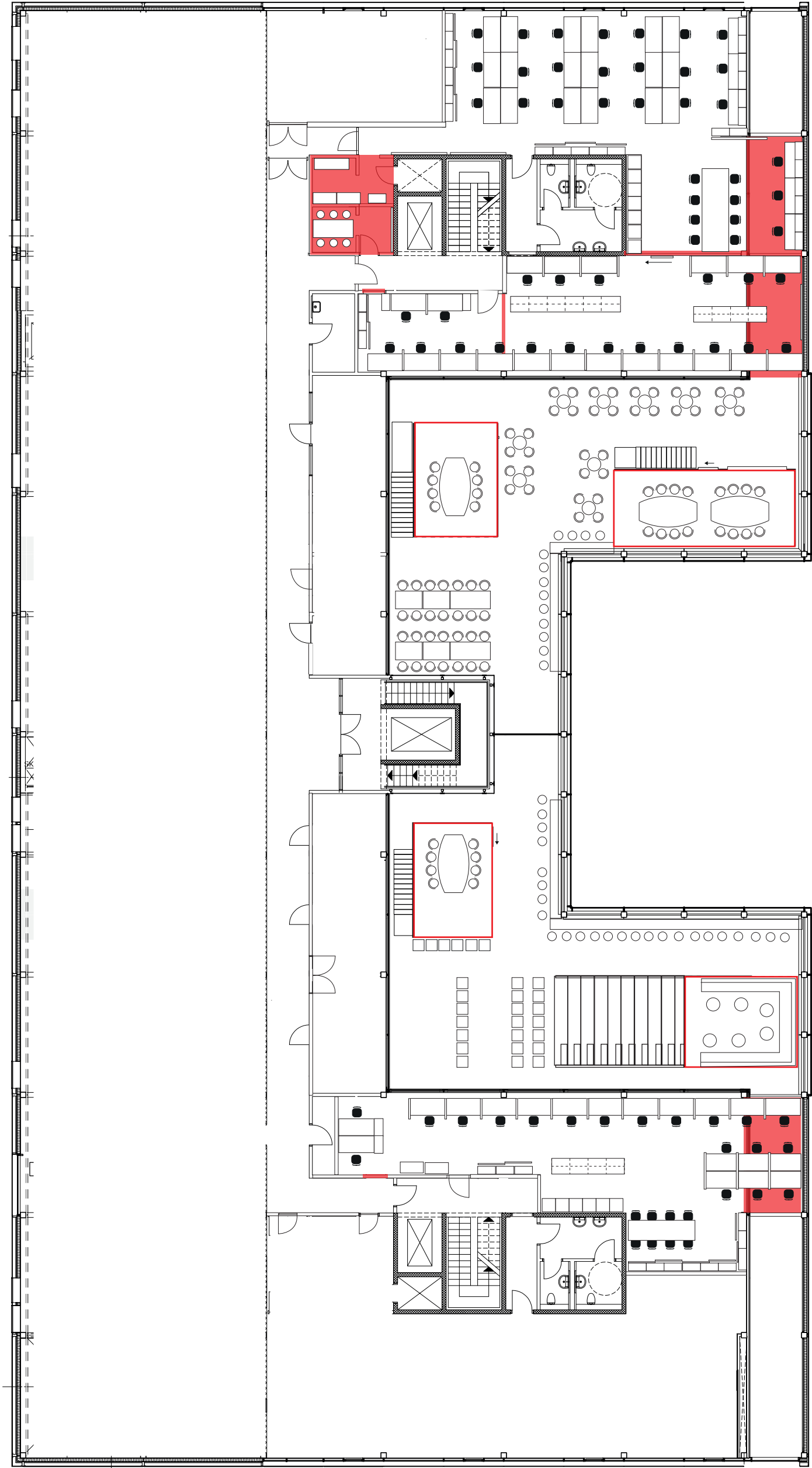
CMC BIOLOGICS

1ST FLOOR



ALTERATIONS_FLOORPLANS

2ND FLOOR



Proudlypresent ApS

Blankavej 18, st th
2500 Valby

Jette Danholm Kristiansen
Designer & projektleder
Mobil: 50 89 89 55

Christina Widholm
Designer & projektleder
Mobil: 51 80 90 92

Email: info@proudlypresent.dk